



CLEAN ROOM DRY ROOM

TURN-KEY EPC
CONTRACTOR

www.eccamerica.com





Together, We Make It Happen.

Together, We provide a turn-key solution to the specialized construction of Clean Room/Dry Room (CR/DR) environments.

Together, We build the most reliable, cost effective & cleanest environment solutions – customized to meet the specific needs of each CR/DR project.

EASTERN CONTRACTORS CORPORATION

Transforming the Future of Clean Room & Dry Room Construction

Eastern Companies was established by CEO & Founder, Peter Kim, in 1998 as a building envelope contractor. The organization has evolved into a multi-disciplined family of companies, currently comprised of four (4) subsidiaries equipped to meet virtually any construction need. Today, Eastern Contractors Corporation's (ECC) focus is as an industrial general contractor specializing in Clean Room/Dry Room (CR/DR) solutions.



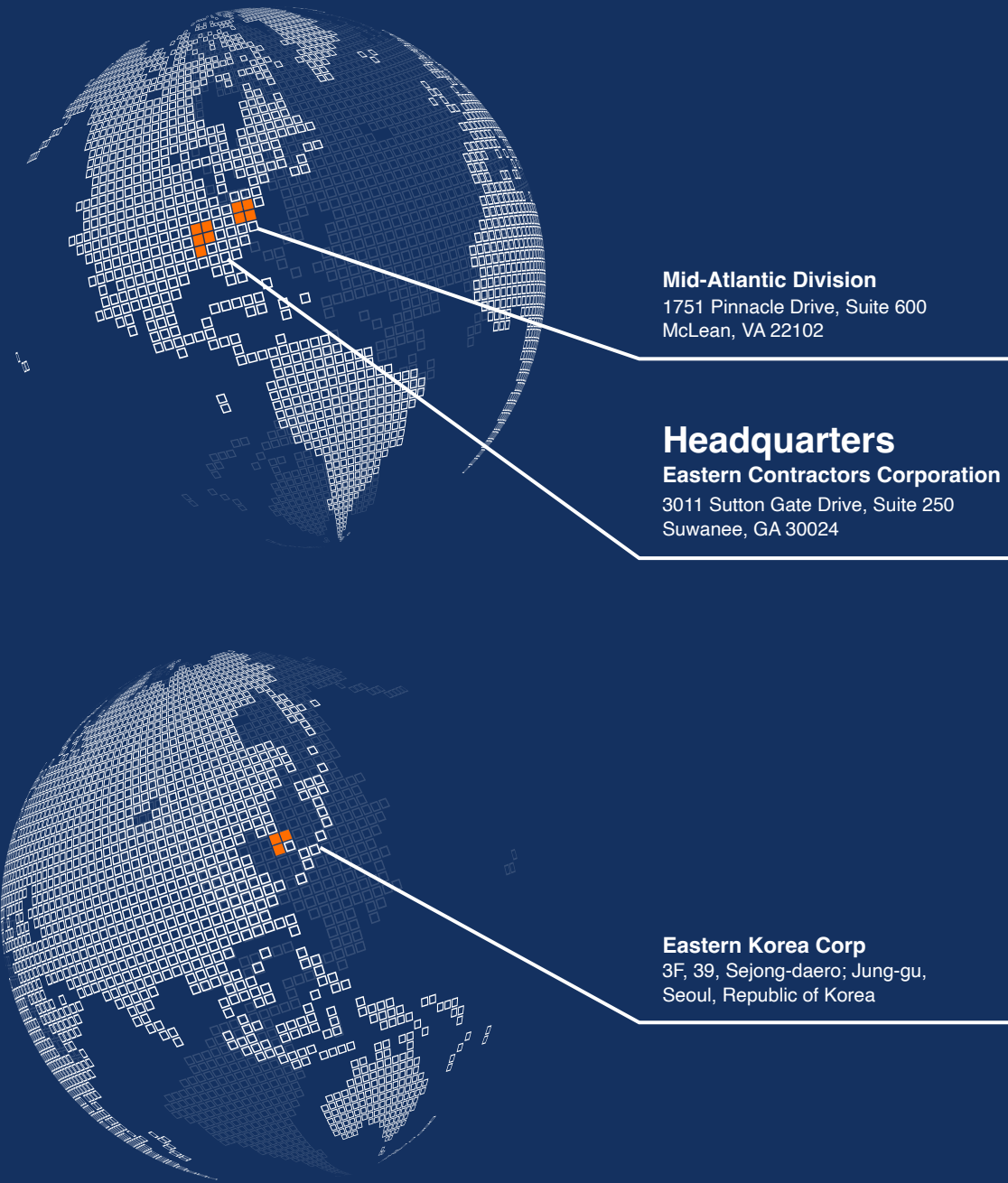
DISCOVER THE EASTERN DIFFERENCE

South Korea is known for being a global leader in electronics production and over the past decade they have been setting the standard for CR/DR manufacturing facilities. ECC has established strategic (and sometimes exclusive) relationships with key Korean manufacturers & industry partners, who can provide innovative & flexible clean room environments. Each environment is uniquely tailored to your production process from design, engineering & procurement, construction through commissioning and certification.

Bonding Capacity	EMR Rating
\$600M	0.74
3	28+
Office Locations	Licensed States

Robust Global Network

Leveraging our robust supplier network, ECC is uniquely positioned to economically source and manage large quantities of materials fabricated in South Korea. We provide a customized, value-driven solution that allows us exclusive access to materials not manufactured in the U.S. and only available through South Korean suppliers.



STRATEGIC GROWTH

Innovation Breakthrough

Today, **ECC** continues to build on the foundation laid many years ago by staying ahead of the curve with an effective workforce strategy by positioning **ECC** at the forefront of new opportunities. Thus, amid shifting market dynamics, we revolutionized our business model to provide specialized CR/DR construction services to meet the industry demand for critical battery production processes and powering up a sustainable, clean-energy future.

Expansion & Sustainability

ECC has continued to evolve and effectively navigate complex building design requirements. Leading us to capitalize on our unique ability to serve as both a general contractor and building envelope systems specialist. Adapting to our client's desire for single-source accountability.

Entrepreneurship & Growth

With our roots as a self-performing roofing contractor, fueled by a bold vision, perseverance and commitment to innovation has led to strategic growth as a construction conglomerate equipped to meet virtually any industry need.

TURN-KEY SOLUTION

Creating a Dynamic Integration between Multiple Trades & Manufacturing Systems

Our integrated turn-key solution to CR/DR construction creates a comprehensive approach designed to streamline your project's execution. This approach mitigates risk and improves speed to market. Utilizing a single point of contact, supported by a team of management specialists, we collaborate with our global network of trusted partners to develop a single-source solution catered to the specific CR/DR project goals and objectives.

- DESIGN & ENGINEERING
- PROJECT MANAGEMENT
- PROCUREMENT
- MANUFACTURING
- INSTALLATION & VALIDATION
- CLEANING PROTOCOL, PROTOCOL MANAGEMENT & CERTIFICATION

DESIGN & ENGINEERING

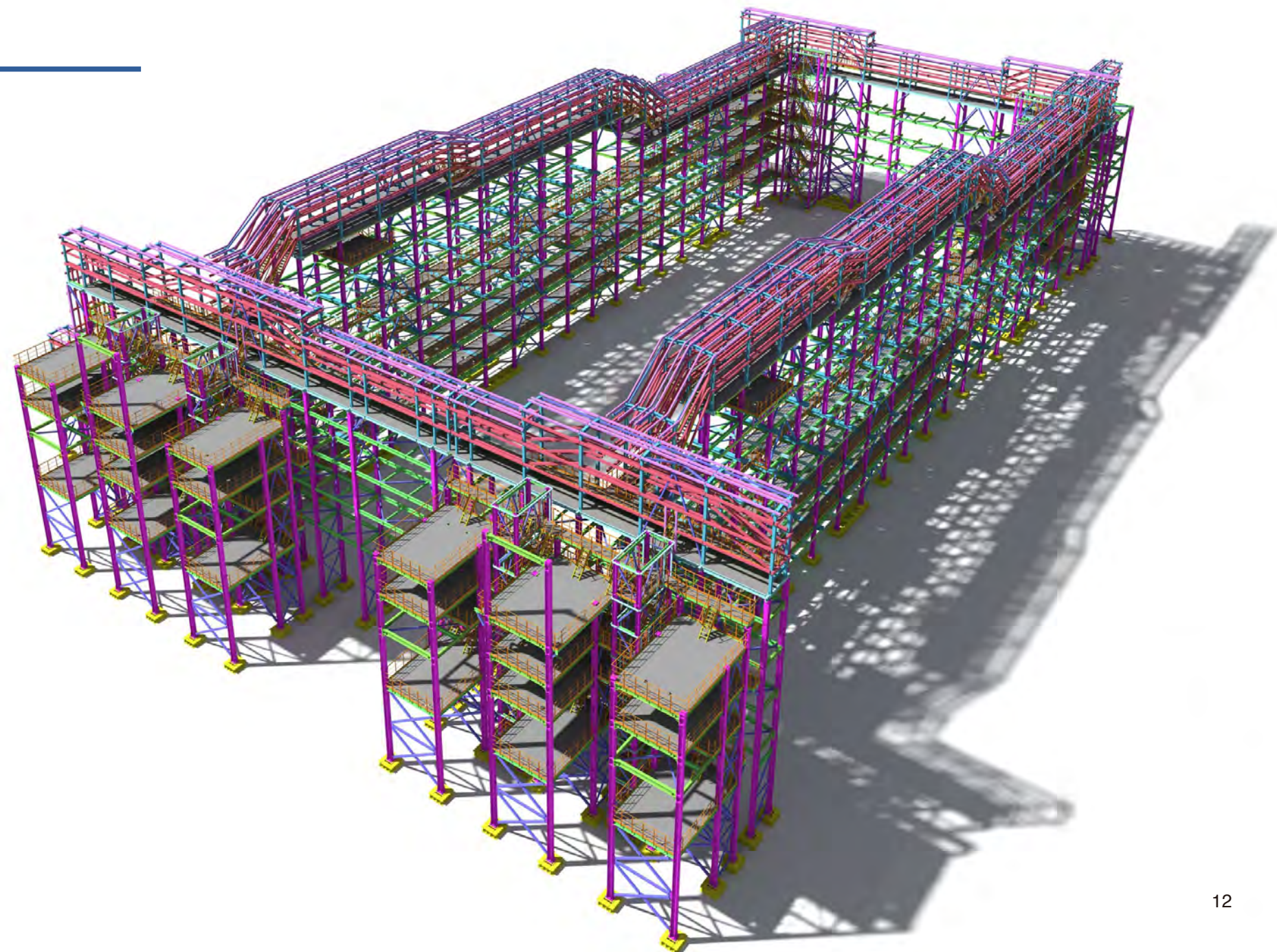
Strategic Approach to Performance Optimization

An in-depth needs analysis is conducted to determine the most appropriate process flow, classification, and layout configuration. Early identification of your specific process requirements, including equipment and supporting utilities will be essential for accurate integration during conceptual design through detailed design including 2D and 3D Revit modeling. This approach enables us to work collaboratively with our clients to develop a project in accordance with their specific requirements whilst also managing the overall cost of the program. Our comprehensive design offerings include:

- ✓ Design Layout arrangements for structural, electrical & mechanical
- ✓ Schematics for HVAC, ductwork, lighting and wiring diagrams
- ✓ Process Flow Diagrams
- ✓ Elevations and sectional drawings
- ✓ Pressure Cascade Diagrams
- ✓ Furniture & Equipment Layouts
- ✓ 3D models and animations

BIM Modeling

A BIM model can contain information and data on design, construction, logistics, operation, budgets, maintenance, schedules, and much more. Information created in one project phase can be passed on to the next one for further development or reuse. Using our standards and experience working with our customers, we establish customer-specific BIM requirements for every project, defining the scope and benefits of using BIM. These benefits are enhanced when the process is considered as a whole, and the information/data requirements are coordinated. Using the BIM approach, changes in all phases of the building life cycle are immediately visible to all the parties involved, and the effects are synchronized immediately.



PROJECT MANAGEMENT

Effectively Streamlining the Construction Process

ECC selects your project's full-time on-site construction manager based on the unique requirements of your project. Our skilled construction managers are responsible for quality, craftsmanship, protocol management and safety. ECC has armed our construction managers with wireless tablets that contain up to date design documents, including drawings, specifications, submittals and 3D BIM models for your project. This commitment to technology and training allows our field teams to address issues on-site in real time, with the confidence of our complete team backing them up.

- ✓ Approval of Shop Drawings & Submittals
- ✓ Construction Logistics Planning
- ✓ Supplier & Field Crew Management
- ✓ Safety & Quality Control Programs
- ✓ MEP Process Utility Equipment
- ✓ Equipment & Material Validation & Installation
- ✓ Start-up & Commissioning



PROCUREMENT

Optimizing Production & Boosting Supply Chain Efficiencies

ECC has developed relationships with supply partners across North America and Asia. We continually strive to deliver excellence in relation to functionality, performance and value. Design workshops, CPD training and production quality control audits are some of the tools utilized by ECC to ensure that the supply chain partners maintain historical supply standards, while also challenging for continual improvement for all elements of the product supply. Continual improvement and new product development are core principles of the ECC business function, and this can only be achieved with the management and aid of our supply chain partners.

Supply Chain

The key to resiliency when navigating supply chain risks is collaboration amongst buyers & suppliers. ECC's workforce strategy offers our clients exclusive access to an expansive global network of reliable CR/DR trade suppliers and subcontractors.



MANUFACTURING

Offering Unparalleled Proficiency in Advanced Manufacturing

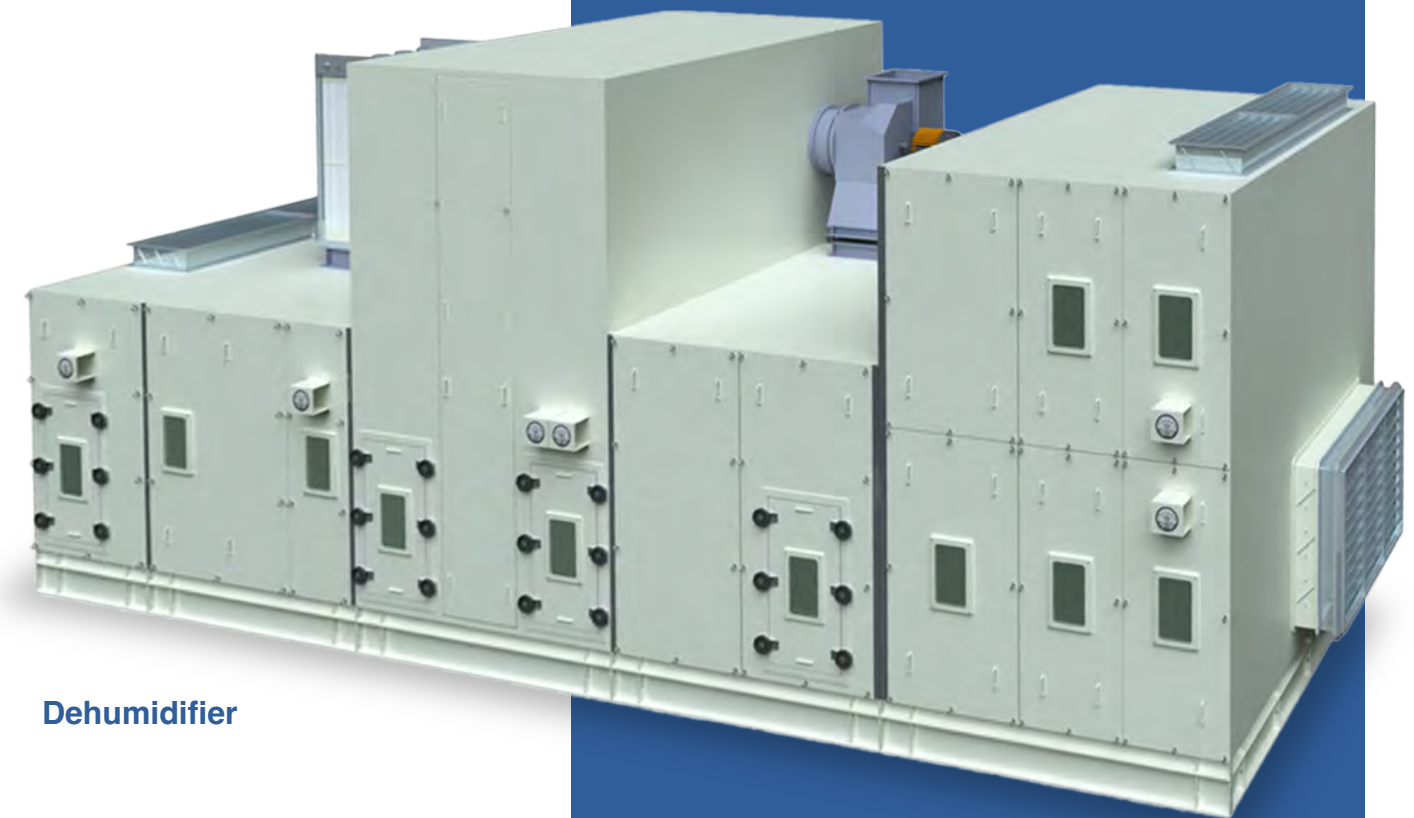
The attributes of our manufacturing process make ECC uniquely specialized due to our ability to Internationally-source leading-edge technology in CR/DR equipment and materials from South Korea. Utilizing our expansive network of industry-leading supply partners, we provide our clients with access to the most advanced clean environment manufacturing process solutions to ensure each CR/DR achieves the highest standards of quality and sustainability during the manufacturing process.



Air Shower



BCU By Pass Cooling Unit



Dehumidifier

Quality Control

Each manufacturing component of our CR/DR environments is required to pass a detailed material quality control evaluation, which considers:

- ✓ ISO class
- ✓ Recovery time
- ✓ Reliability over time
- ✓ Accessibility and maintenance
- ✓ Effects of abrasion and impact
- ✓ Cleaning and sanitizing methods/frequency
- ✓ Corrosion caused by chemicals

INSTALLATION & COMMISSIONING

Full Compliance

Turn-key installations are managed and delivered by our dedicated structural, mechanical & electrical installation engineers. All projects are commissioned by the decontamination & validation team and supported with detailed, technical documentation providing full compliance to standards. ECC's installation engineers are experts at installing, servicing and operating procedures for critical environments and closely monitor all aspects of installation and compliance.



CLEANING PROTOCOL, PROTOCOL MANAGEMENT & CERTIFICATION

Cleaning Protocol

Depending on your industry and applications, your cleanroom will have specific ISO classification and cleanliness standards.

Protocol Management

The first parameter that must be paid attention to is the quality control systems, such as HEPA filters and machine hoods. These quality control systems monitor, manage and remove particulates and dust particles. If this is not controlled, it can cause pollution particles to enter the environment which could result in the fallout of the specifications set for ISO clean room standards.

Cleanroom Certification

Cleanroom certification is a process that verifies that a cleanroom is functioning correctly and meets industry standards. It involves a third party testing the cleanroom to ensure it meets classification standards, such as air changes per hour and particle counts.

PROJECT HIGHLIGHTS



Envision AESC Battery Plant (Bowling Green, KY)

- Dedicated Clean Room
- Dry Room Subcontractor & Design-Build
- Design-Assist



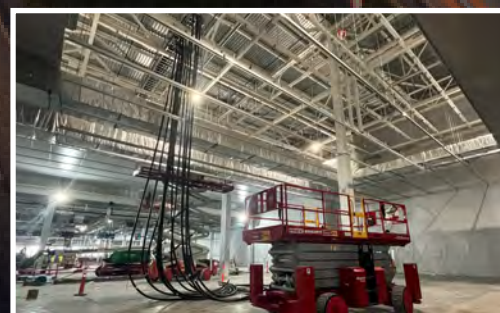
Jaewon Industrial NMP Recycling Plant (Kokomo, IN)

- General Contractor & Clean Room
- Dry Room Oversight



LGES-AZ Cylindrical Battery Manufacturing Facility

- Dedicated Clean Room
- Dry Room Subcontractor & Design-Build
- Design-Assist



LGES MI2 EV Battery Manufacturing Plant (Holland, MI)

- Dedicated Clean Room
- Dry Room Subcontractor & Design-Build
- Design-Assist

SK Battery America Phase 1 (Commerce, GA)

General Contractor & Clean Room / Dry Room Oversight

CONTACT US



For Project Opportunities

Sean Han

sean@eccamerica.com



For Preconstruction

Emanuel Gacea

egacea@eccamerica.com